

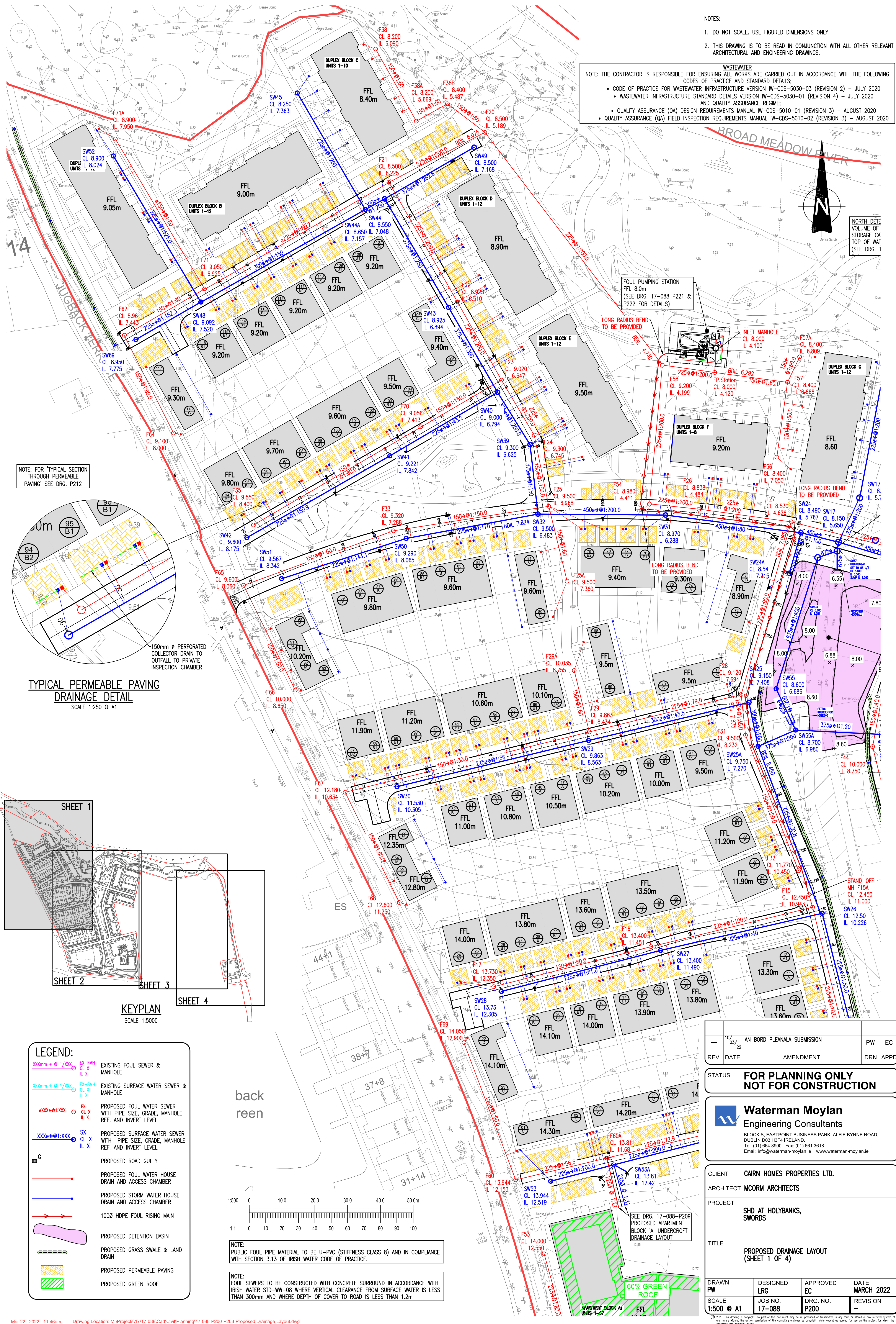
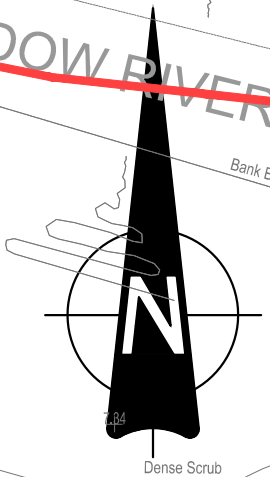
NOTES:

- DO NOT SCALE. USE FIGURED DIMENSIONS ONLY.
- THIS DRAWING IS TO BE READ IN CONJUNCTION WITH ALL OTHER RELEVANT ARCHITECTURAL AND ENGINEERING DRAWINGS.

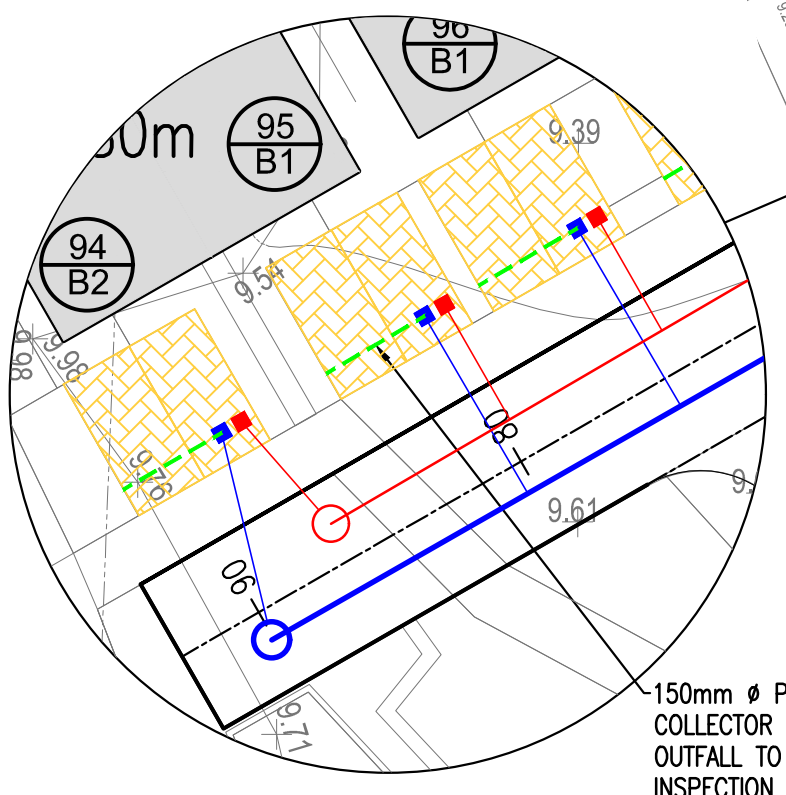
NOTE: THE CONTRACTOR IS RESPONSIBLE FOR ENSURING ALL WORKS ARE CARRIED OUT IN ACCORDANCE WITH THE FOLLOWING CODES OF PRACTICE AND STANDARD DETAILS:

- CODE OF PRACTICE FOR WASTEWATER INFRASTRUCTURE VERSION IW-CDS-5030-03 (REVISION 2) - JULY 2020
- WASTEWATER INFRASTRUCTURE STANDARD DETAILS VERSION IW-CDS-5030-01 (REVISION 4) - JULY 2020 AND QUALITY ASSURANCE REGIME;
- QUALITY ASSURANCE (QA) DESIGN REQUIREMENTS MANUAL IW-CDS-5010-01 (REVISION 3) - AUGUST 2020
- QUALITY ASSURANCE (QA) FIELD INSPECTION REQUIREMENTS MANUAL IW-CDS-5010-02 (REVISION 3) - AUGUST 2020

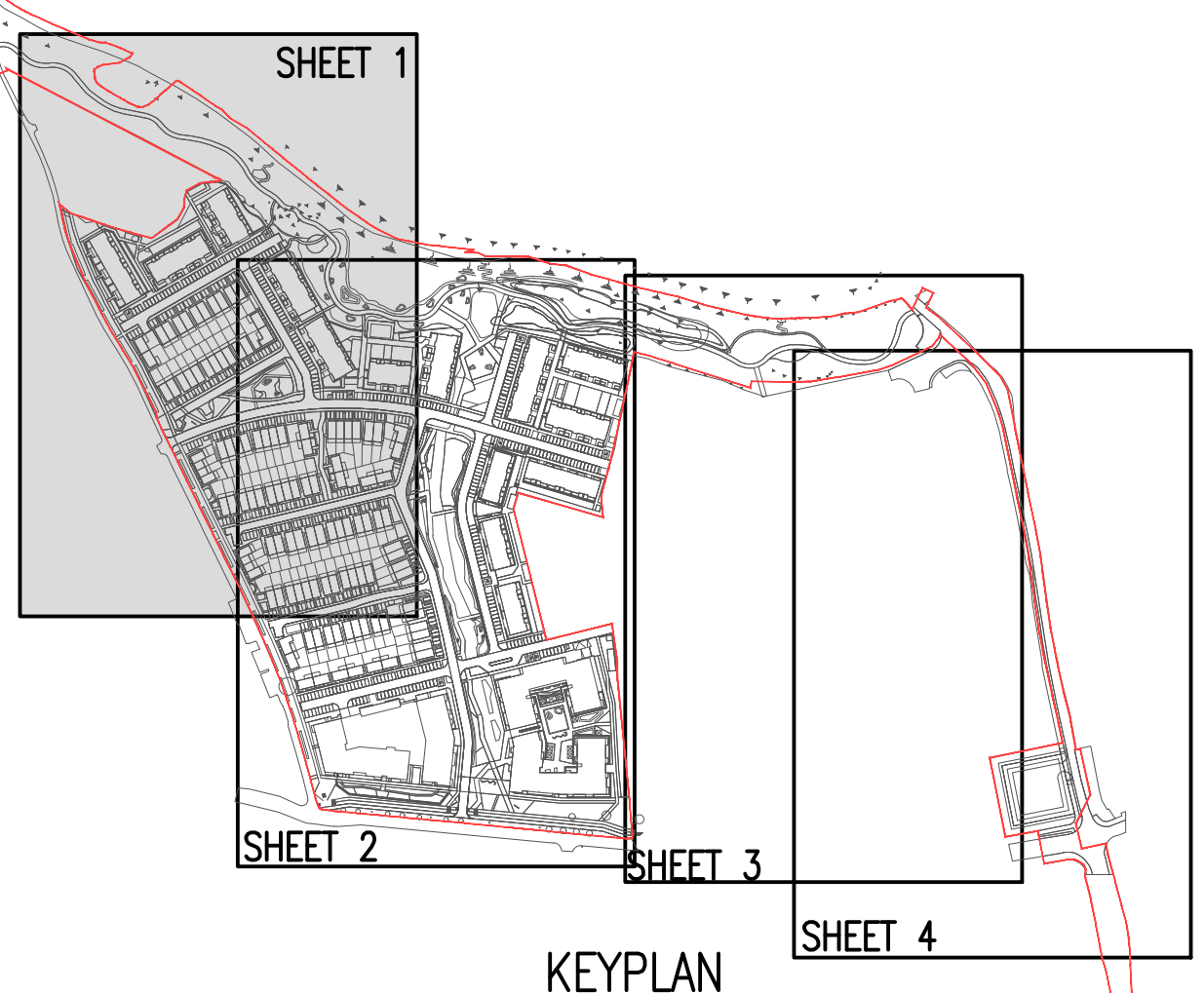
WASTEWATER  
 NORTH DETE VOLUME OF STORAGE CA TOP OF WAT (SEE DRG. 1)



NOTE: FOR TYPICAL SECTION THROUGH PERMEABLE PAVING SEE DRG. P212

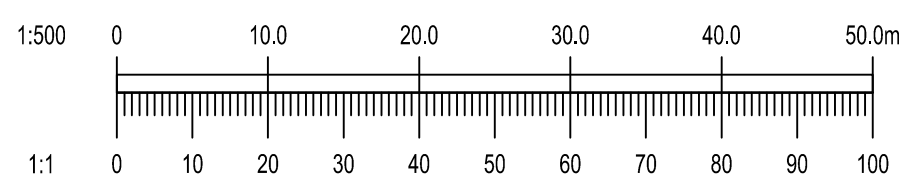


TYPICAL PERMEABLE PAVING DRAINAGE DETAIL  
 SCALE 1:250 @ A1



**LEGEND:**

	EXISTING FOUL SEWER & MANHOLE
	EXISTING SURFACE WATER SEWER & MANHOLE
	PROPOSED FOUL WATER SEWER WITH PIPE SIZE, GRADE, MANHOLE REF. AND INVERT LEVEL
	PROPOSED SURFACE WATER SEWER WITH PIPE SIZE, GRADE, MANHOLE REF. AND INVERT LEVEL
	PROPOSED ROAD GULLY
	PROPOSED FOUL WATER HOUSE DRAIN AND ACCESS CHAMBER
	PROPOSED STORM WATER HOUSE DRAIN AND ACCESS CHAMBER
	1000 HDPE FOUL RISING MAIN
	PROPOSED DETENTION BASIN
	PROPOSED GRASS SWALE & LAND DRAIN
	PROPOSED PERMEABLE PAVING
	PROPOSED GREEN ROOF



NOTE: PUBLIC FOUL PIPE MATERIAL TO BE U-PVC (STIFFNESS CLASS B) AND IN COMPLIANCE WITH SECTION 3.13 OF IRISH WATER CODE OF PRACTICE.

NOTE: FOUL SEWERS TO BE CONSTRUCTED WITH CONCRETE SURROUND IN ACCORDANCE WITH IRISH WATER STD-WW-08 WHERE VERTICAL CLEARANCE FROM SURFACE WATER IS LESS THAN 300mm AND WHERE DEPTH OF COVER TO ROAD IS LESS THAN 1.2m

REV.	DATE	AMENDMENT	DRN	APPD
10/03/22		AN BORD PLEANALA SUBMISSION	PW	EC

**STATUS FOR PLANNING ONLY NOT FOR CONSTRUCTION**

**Waterman Moylan**  
 Engineering Consultants  
 BLOCK 5, EASTPOINT BUSINESS PARK, ALFIE BYRNE ROAD, DUBLIN D03 H3F4 IRELAND.  
 Tel: (01) 664 8900 Fax: (01) 661 3618  
 Email: info@waterman-moylan.ie www.waterman-moylan.ie

CLIENT	CARN HOMES PROPERTIES LTD.		
ARCHITECT	MCORM ARCHITECTS		
PROJECT	SHD AT HOLYBANKS, SWORDS		
TITLE	PROPOSED DRAINAGE LAYOUT (SHEET 1 OF 4)		
DRAWN PW	DESIGNED LRG	APPROVED EC	DATE MARCH 2022
SCALE 1:500 @ A1	JOB NO. 17-088	DRG. NO. P200	REVISION -